

Contents

Xmas Closing Dates 1

Your Settlements Team 2

THANK YOU

We would like to thank all our clients for their continued support and we look forward to working with you in 2010.

A big thank you to our settlements officers who continuously pull out all the stops to ensure your settlements happen in an efficient and timely fashion. We wish you all a very merry Xmas and a fabulous New Year.

Closing Dates over Christmas/New Year



Settlement Services Limited will be closed over the Christmas/New Year period from close of business Wednesday 23 December 2009 and we will reopen on Thursday 14 January 2010.

If you need to contact someone urgently during the break, please leave a message on the following direct line:

Helen Melrose (09) 356 2625

Helen will be checking her messages regularly throughout the break and will return your message promptly.

Your Settlements Team

Settlement Services Limited

Level 7
52 Swanson Street
Auckland 1010

PO Box 5142
Wellesley Street
Auckland 1141

Phone
09 356 2620

Fax
09 356 2631

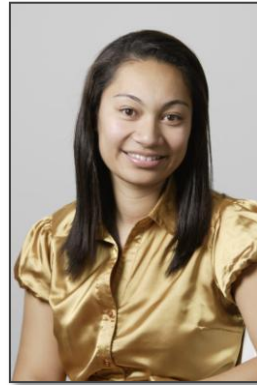
Email
enquiries@settlements.co.nz

*Complete
Settlement
Solutions*



Annette Wildman
Senior Settlements Officer

Contact Annette on
09 356 2612, or email
awildman@settlements.co.nz



Naomi Taufua
Settlements Officer

Contact Naomi on
09 356 2642, or email
ntaufua@settlements.co.nz



Selina Tu'u
Settlements Officer

Contact Selina on
09 356 2619, or email
stuu@settlements.co.nz



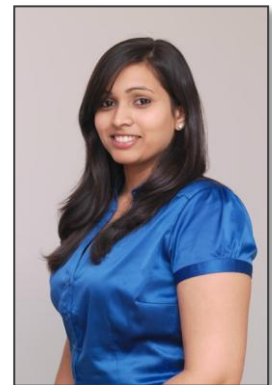
Jaya Muthu
Settlements Manager

Contact Jaya on 09 356 2617,
or email
jmuthu@settlements.co.nz



Jo Robertson
General Manager

Contact Jo on 09 356 2641, or
email
jrobertson@settlements.co.nz



Pearl Jathanna
Office Assistant

Contact Pearl on 09 356 2624,
or email
pjathanna@settlements.co.nz

Welcome to Pearl

Pearl joined SSL in early November 2009 following completion of her undergraduate studies at the University of Auckland. She brings considerable organisational skills and energy to her role of providing administrative support to the settlements team.